

C1 WET VALVE

100/150MM FLANGED / FLANGED

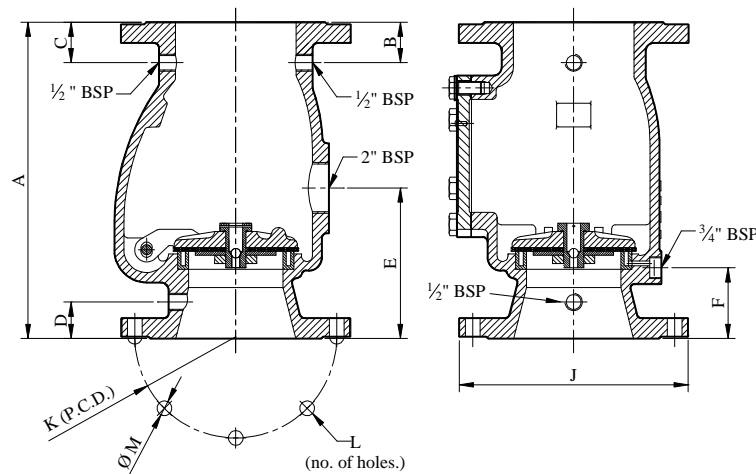
GENERAL DESCRIPTION AND SPARE PARTS

(ALSO AVAILABLE FLANGED/ GROOVED & GROOVED /GROOVED).

APPROVALS

Ø mm	Max. Working Pressure	LPC	FM	VDS
80mm	12.5 bar	✓		✓
100mm	12.5 bar	✓	✓	✓
100mm	20.0 bar	✓	✓	
150mm	12.5 bar	✓	✓	✓
150mm	16.0 bar	✓		
200mm	12.5 bar	✓	✓	✓

The Model C1 Wet Alarm Valve is intended for installation in wet sprinkler systems having water under pressure in the piping from the Alarm Valve to the sprinkler heads. When the valve senses the flow of water caused by the operation of one or more sprinkler heads it diverts part of the water supply to a water motor alarm gong. A wet sprinkler alarm valve should not be installed where the temperature may cause the water to freeze.



Dimensions	A	B	C	D	E	F	J	K	L	M	Net. Weight
80mm	245	38	89	38	115	67	200	160	8	18	19kg
100mm	316	42	42	39	160	77	220	180	8	18	29kg
150mm	390	50	50	46	185	88	285	240	8	22	47kg
200mm	438	50	50	52	214	102	340	295	12	22	84kg

Model C1 Alarm Valves are manufactured as standard in cast iron with a bronze clapper and seat. All standard valves are hydrostatically tested to 32 bar and have a rated working pressure of 12.5 bar. Flanges are to BS 4504 – PN16 (20 bar rated valves, PN25) and threads to BS 21 – ISO 7/1. The Model C1 is fitted with a bronze internal compensator or non-return valve allowing slow increases in the supply pressure to pass the clapper. This causes the system pressure above the valve to be maintained at the maximum supply pressure, reducing false alarms caused by supply pressure fluctuations and eliminating the need for a retard chamber.

The right is reserved to vary or modify any specifications without prior notice.

Data Sheet: C1 Wet Valve General

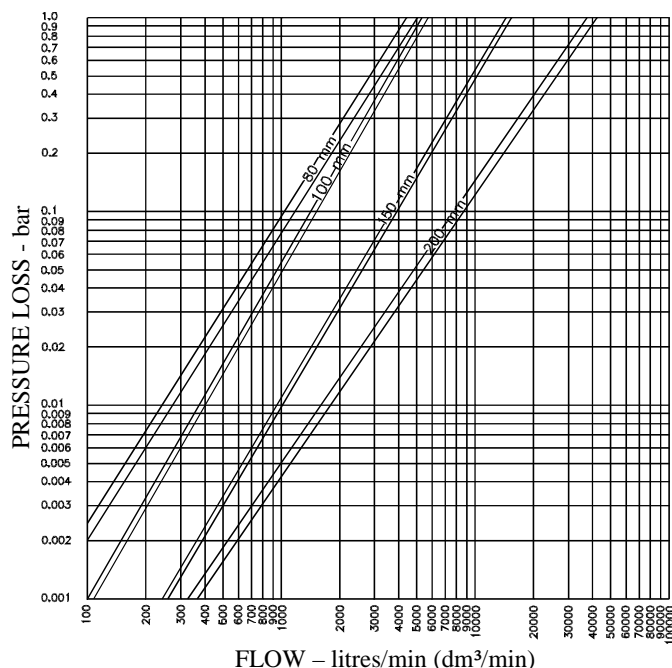
DATA SHEET No:

MODEL C1 WET VALVE

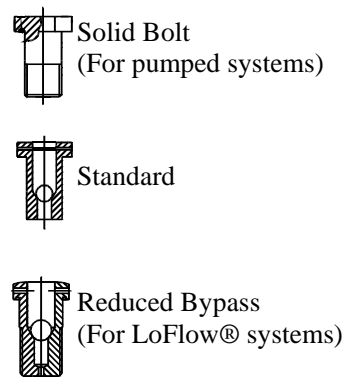
100/150MM FLANGED/FLANGED

GENERAL DESCRIPTION AND SPARE PARTS

(ALSO AVAILABLE FLANGED/ GROOVED & GROOVED /GROOVED).

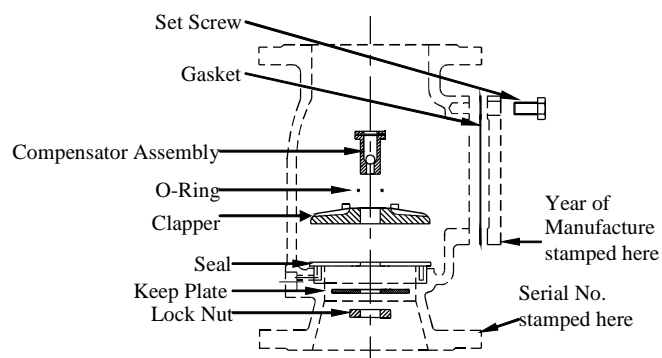


COMPENSATOR OPTIONS



DESCRIPTION	PART NUMBERS			
	80mm	100mm	150mm	200mm
COVER PLATE GASKET	BE24125	BE24141	BE24142	BE07445
CLAPPER RUBBER SEAL	BE24126	BE07238	BE07191	BE07448
CLAPPER	BE24121	BE07234	BE07187	BE07444
SPINDLE	BE24128	BE07235	BE07188	BE07449
KEEP PLATE	BE24120	BE24563	BE24564	BE24565
COMPENSATOR ASSEMBLY (STD)*	ES24573	ES24573	ES24574	ES24574

*Includes ball, pin, and “O” Ring



The right is reserved to vary or modify any specifications without prior notice.